

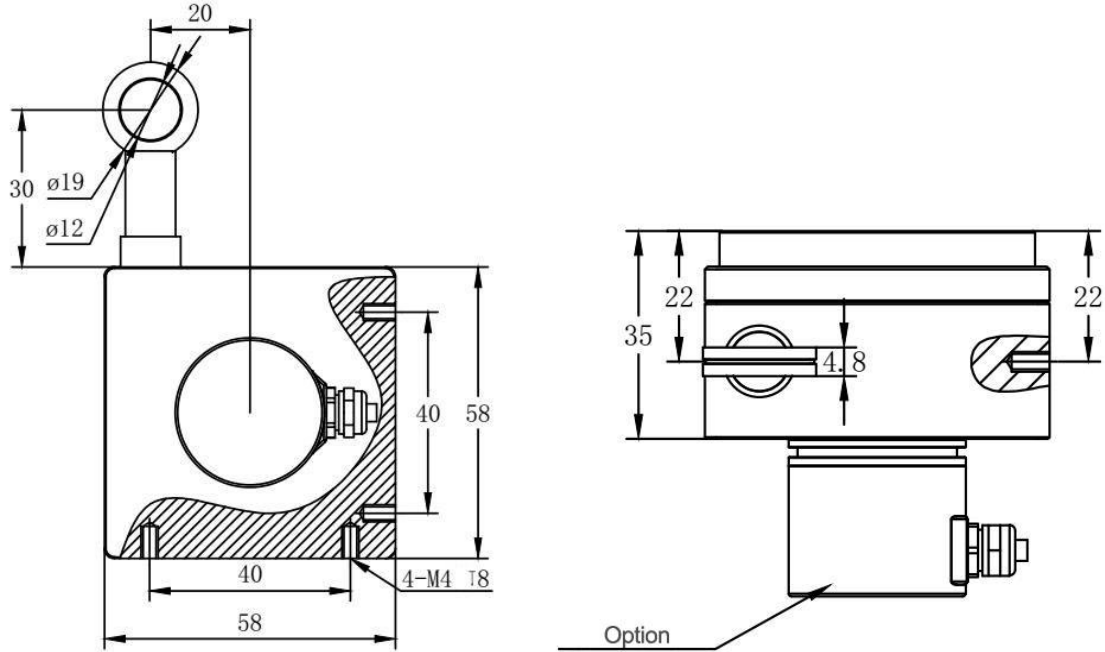
Features and applications:

- Measuring range 0~1000mm
- Various interface for option
- Compact housing and flexible assembly
- High resolution
- Applied in harsh environments



Model	PNL5125
Measuring distance	1000 mm
Limit distance	1500 mm
Single turn length	125 mm
Cable diameter	0.6 mm or 0.8 mm
Tension range	5-15N
Measuring accuracy	±0.05%
Max. speed	4 m/s
Body material	Aluminum
Cable material	316L Stainless steel with plastic coating
Operating temperature	-45°C.....+105°C
Protection class	IP54/IP65
Life time	5 million times
Signal option for Absolute encoder	
Output signal	4-20mA , 0-5V , 0-10V , 0-20mA , SSI , Parallel , RS485 , MODBUS-RTU , Profibus-DP , CANopen
Operating voltage	10....30Vdc or 5Vdc
Signal adjustment	Value of each turn / Direction/ Preset position/ External zero position/ Total range adjustable,
Protection class	IP65 (Housing IP67/ Shaft IP65)
Signal option for Incremental encoder	
Output mode	HTL/push-pull output, TTL/RS422, voltage output, current output
Output signal	A B , A B Z or A B Z+ A/ B/ Z/
Operating voltage	5±0.25 Vdc or 10....30Vdc
Number of pulse	1~5000
Connection	Cable or Connector

Dimension Drawing:



Order Reference						
PNLS125	-1000	B	L	E	C01	D
Model	Measuring range	Encoder type	Output signal	Operating voltage	Connection	Special customization
PNLS125	0100: 100mm 0500: 500mm 1000: 1000mm	A: Incremental pulse output B: Absolute signal output	FB: Pulse signal L : 4-20mA 0L : 0-20mA V : 0-5V 0V : 0-10V RS : RS485 R2 : RS422 RM: Modbus SG : SSI Gray Code SB : SSI binary PG: Parallel Gray code PB : Parallel binary CA : CANopen DP : Profibus-DP NT : DeviceNet	E: 10-30Vdc A: 5Vdc	C01: Side cable C02: Rear cable C03: Side connector C04:Rear connector	D: Cable extension E: Mounting plate F1: With cover